



OWNER'S MANUAL

Version 1.0 | 19/09/2024

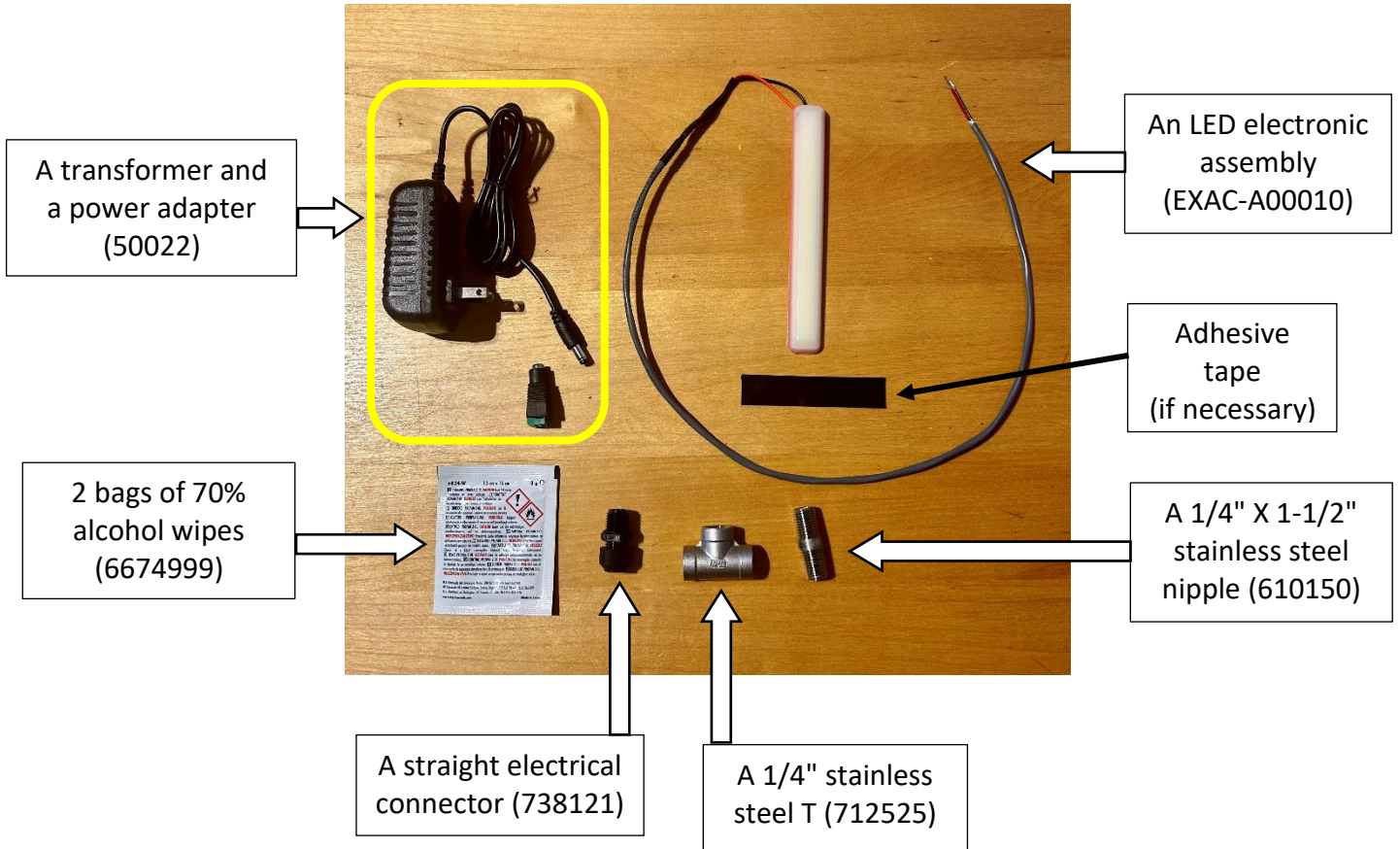
72000202-MAN-EN

EXTRACTOR LED LAMP INSTALLATION



***IMPORTANT: Minimum temperature of 5° required for installation.**
The fixing could be defective if the temperature is not respected.

REQUIRED MATERIALS



Supplied by CDL:

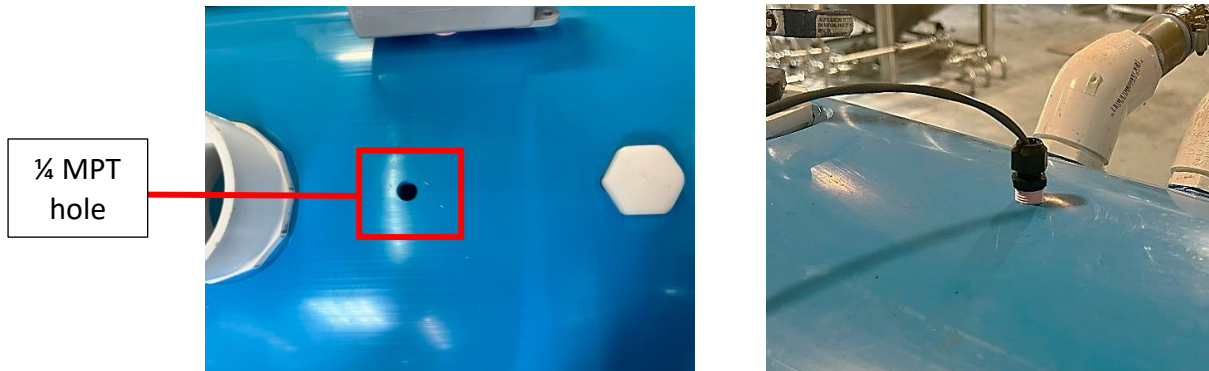
- Transformer and a power adapter
- Bags of 70% alcohol wipes
- Straight electrical connector
- 1/4" stainless steel T
- 1/4" X 1-1/2" stainless steel nipple
- LED electronic assembly

Supplied by the customer:

- Teflon tape
- Adhesive tape

Step 1 – Determine the type of installation required

If you don't have anything installed in the ¼ hole, your installation (#1) might look like this:



***IMPORTANT:** Installation #2 is an example. It may change depending on your assemblies/plumbing.

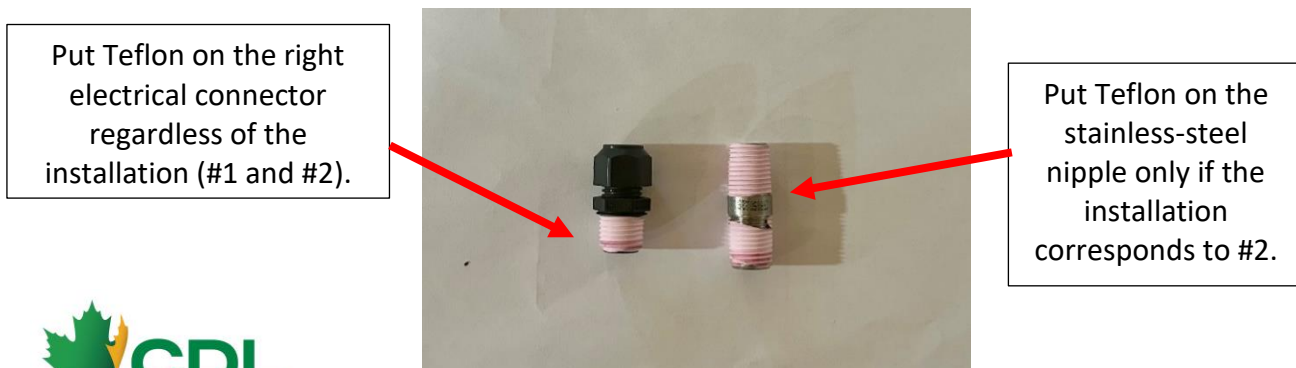
If you already have something installed in the ¼ hole, your installation (#2) might look like this (depending on the mounting/plumbing):



***Caution:** Do not do the final assembly until the EXAC-A00010 wire has come out of the electrical connector. It is important to go piece by piece in order to pass this wire through.

Step 2 – Apply Teflon to the required parts

*Apply Teflon only to the parts needed (depending on the installation required).



***IMPORTANT: Minimum temperature of 5° required for installation.**

Step 3 – Target the LED location in the extractor

Take the time to define the location of the LED in the extractor. Preferably, the LED should be placed in the center and in the highest part.

Step 4 – Clean the surface of the LED location

Take the alcohol wipe(s) to clean the surface where the LED will be placed.

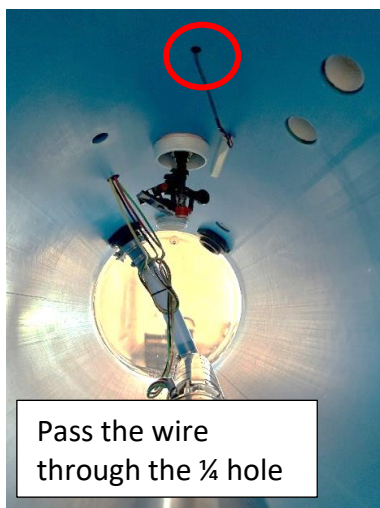
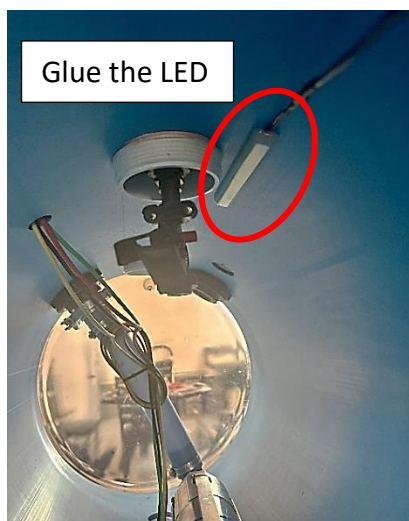
Step 5 – Glue the LED into the extractor

*Important: wait for the alcohol to dry before sticking the LED (about 2 minutes).

Remove the red film under the LED.



Glue the LED to the cleaned surface, in the previously chosen location. Press firmly on the LED to ensure that it is well glued. Then, pass the wire through the ¼ hole.



Step 6 – Redo the plumbing while running the LED wire through it

If the installation is #1:

1. Pass the wire through the right electrical connector and pull it out.
2. Screw in the right electrical connector.

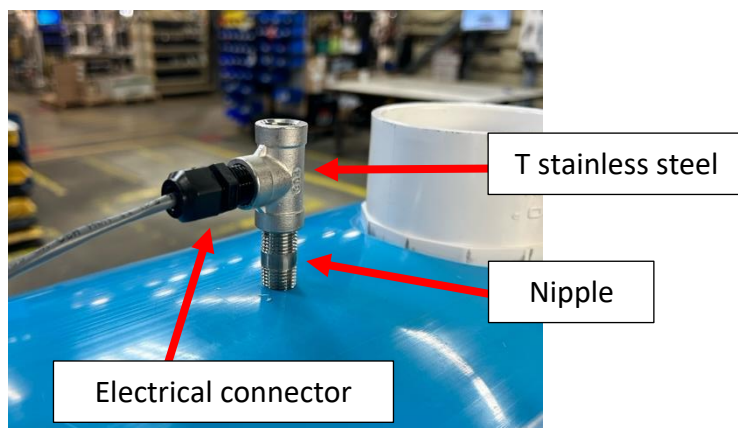


***IMPORTANT:** Installation #2 is an example. It may differ from one place to another.

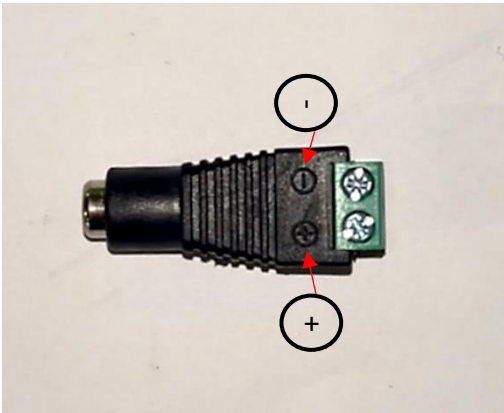
If the installation corresponds to #2:

1. Pass the wire through the nipple and pull it out.
2. Screw the nipple.
3. Pass the wire through the stainless-steel T and pull it out.
4. Screw the stainless-steel T.
5. Pass the wire through the right electrical connector and pull it out.
6. Screw the right electrical connector.
7. Install the other elements.

***IMPORTANT:** Do not forget to tighten the cable gland on the electrical connector.

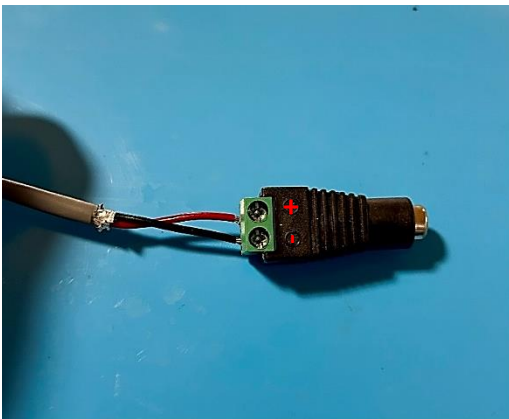


Step 7 – Validate the polarity (+/-) of the power adapter



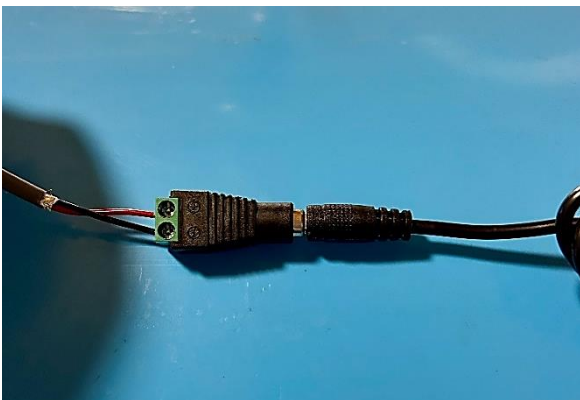
Step 8 – Connect the output wire according to polarity

*It is possible to cover the wire-screw assembly with adhesive tape, but this is not necessary.



- ⊕ Red wire
- ⊖ Black wire

Step 9 – Make the final connection with the included transformer



Step 10 – Check the functionality of the LED light by connecting the transformer to a 110 volt source

